



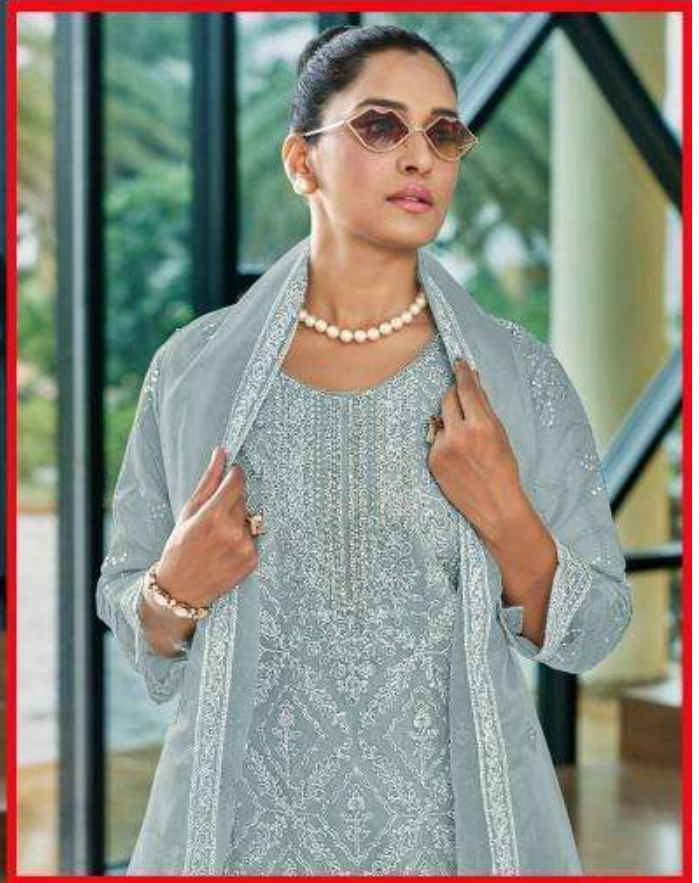








D.NO-105 A



TOP-ORGANAZA WITH EMBROIDRED WORK WITH ZARKAN WORK

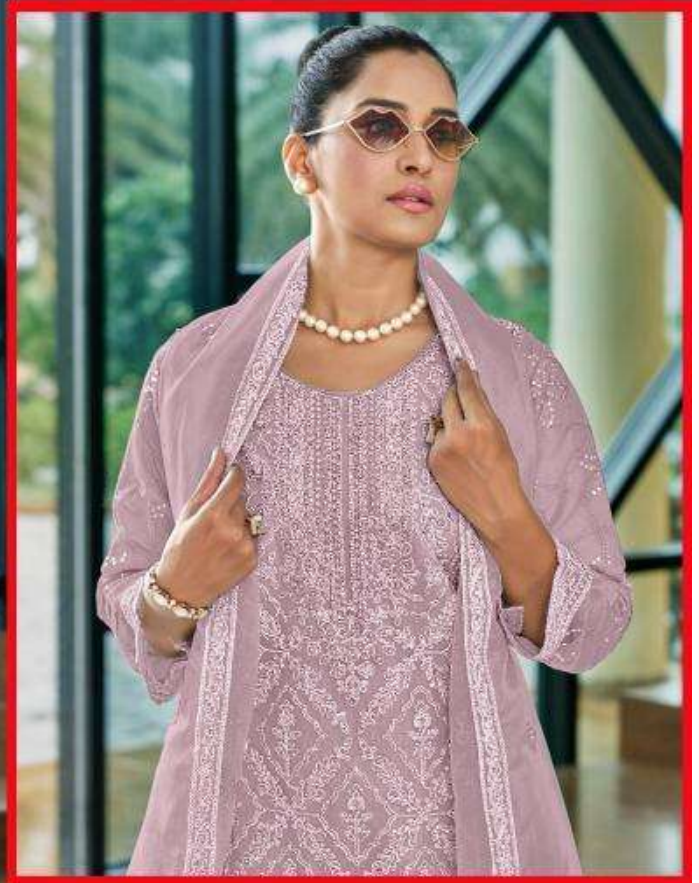
BOTTOM / INNER -DULL SANTOUN WITH PACH WORK

DUPATTA - ORGANZA WITH EMBROIDRY WORK





D.NO-105 B



TOP- ORGANAZA WITH EMBROIDRED WORK WITH ZARKAN WORK

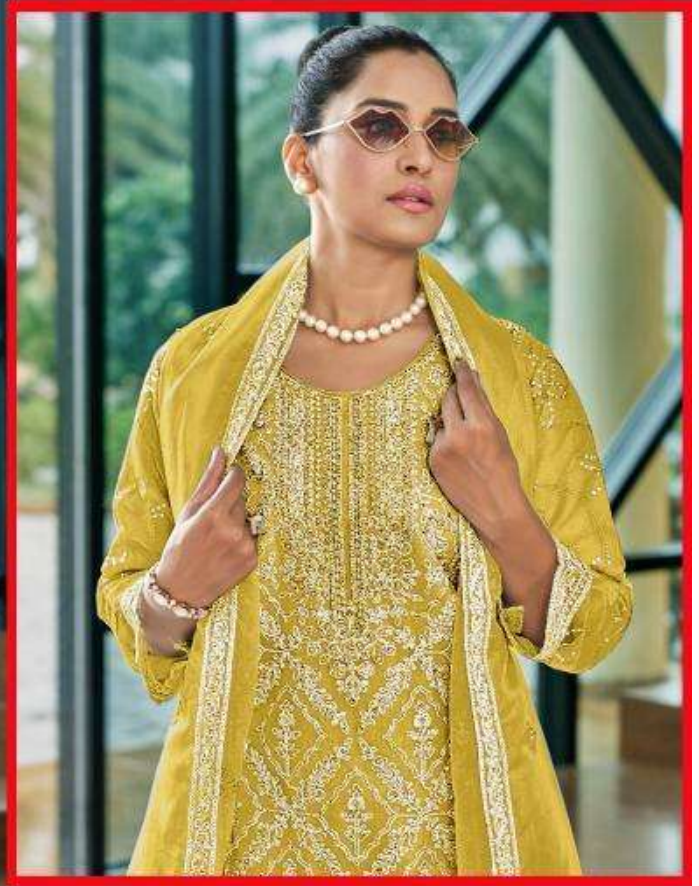
BOTTOM / INNER -DULL SANTOUN WITH PACH WORK

DUPATTA -ORGANZA WITH EMBROIDRY WORK





D.NO-105 D



TOP- ORGANA WITH EMBROIDRED WORK WITH ZARKAN WORK

BOTTOM / INNER -DULL SANTOUN WITH PACH WORK

DUPATTA - ORGANZA WITH EMBROIDRY WORK





D.NO-105 C



TOP- ORGANAZA WITH EMBROIDRED WORK WITH ZARKAN WORK

BOTTOM / INNER -DULL SANTOUN WITH PACH WORK

DUPATTA - ORGANZA WITH EMBROIDRY WORK



TOP- ORGANAZA WITH EMBROIDRED WORK WITH ZARKAN WORK

BOTTOM / INNER -DELL SANTOUN WITH PACH WORK

DUPATTA - ORGANZA WITH EMBROIDRY WORK



D.NO-105 A



D.NO-105 B



D.NO-105 C



D.NO-105 D