



Majestic APPEAL

the very silhouette and styling of this outfit proves quite flattering for most body types and renders majestic appeal



3653



BY ANJU FABRICS

sings of the
FASHION

ethic, wear always bring out the best in you enchanting the significant beauty and poised grace.



BY ANJU FABRICS



3654





BY
AF FABRICS

eternally
CLASSIC

extremely beautiful piece of ethnic wear designed keeping grandeur in mind



3652



The collection marks gorgeous design & a touch of grace & traditional



ethnic wear always bring out the best in you enchanting the significant beauty and poised grace.



www.tribe.in



Majestic APPEAL

the very silhouette and styling of this outfit proves quite flattering for most body types and renders majestic appeal



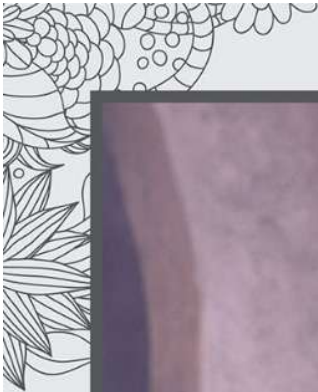
3653



BY
ANJU FABRICS



fashion is about dressing & style is more about being yourself





BY
ANJU FABRICS

Stylish
ELEGANCE

Turn every head your way as you stroll across in an outfit from the new ethnic collection. Celebrate your classy side with perfect for style.



BY
ANJU FABRICS



3656



ANJU FABRICS



You can manage yourself as well as make your style complete and great.

stockout®

BY
ANJU FABRICS



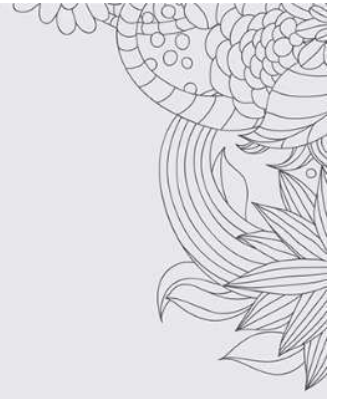
MAYRA 3654



MAYRA 3655



MAYRA 3656



Mayra

VOL.4



stockOUT

BY
ANJU FABRICS

INDORE | SURAT | AHMEDABAD



anjufabrics
hello@anjufabrics.com
MADE IN INDIA



BY
ANJU FABRICS



MAYRA 3651



MAYRA 3652



MAYRA 3653





These designer apparels capture the attention of everyone who sees it.





what is the common factor between design and trends, it's fashion connection both are essential to give perfect fashion look to you..



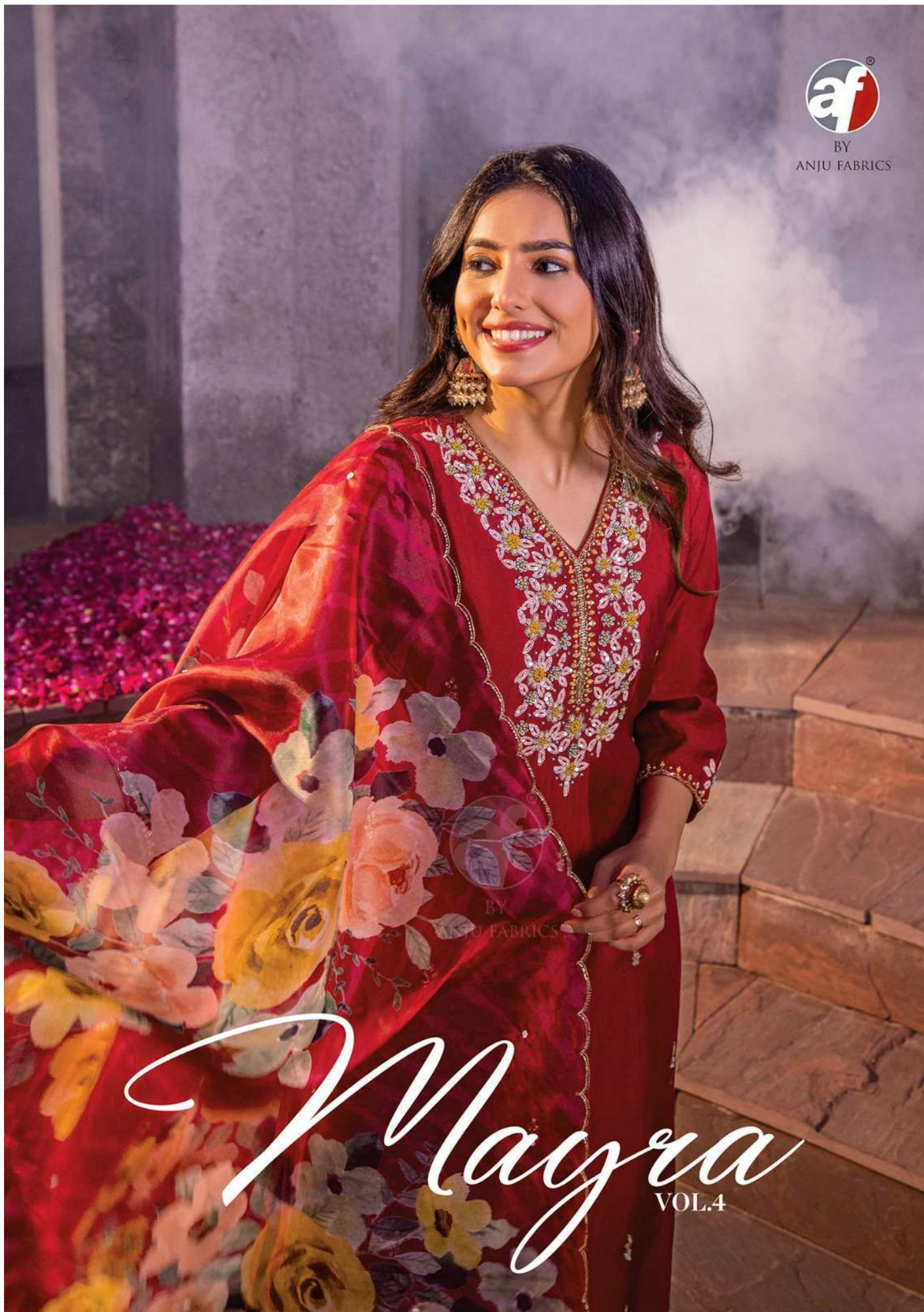
BY
ANJU FABRICS



af
BY
ANJU FABRICS



BY
ANJU FABRICS



Mayra

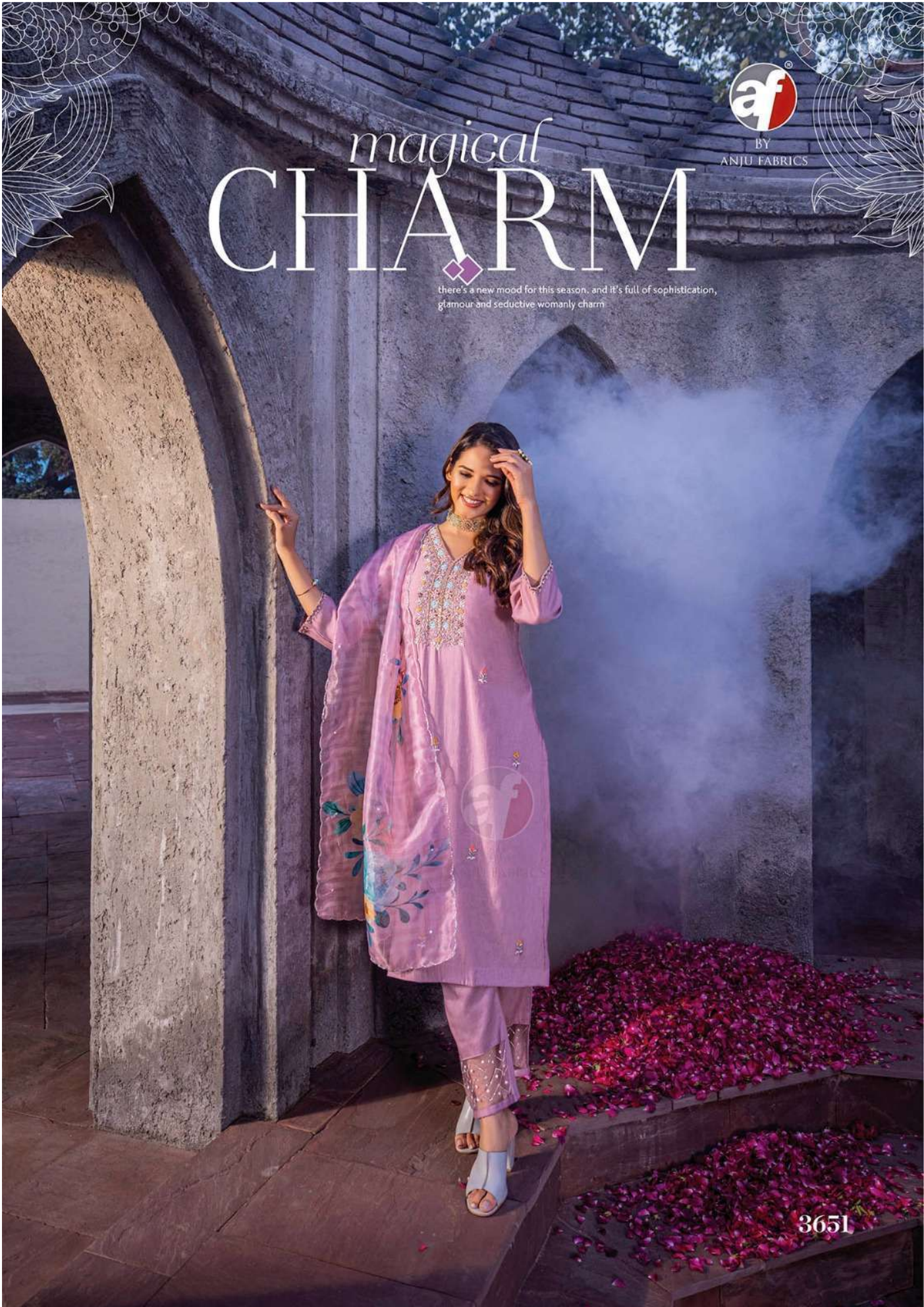
VOL.4



BY
ANJU FABRICS

magical
CHARM

there's a new mood for this season. and it's full of sophistication,
glamour and seductive womanly charm



365L